

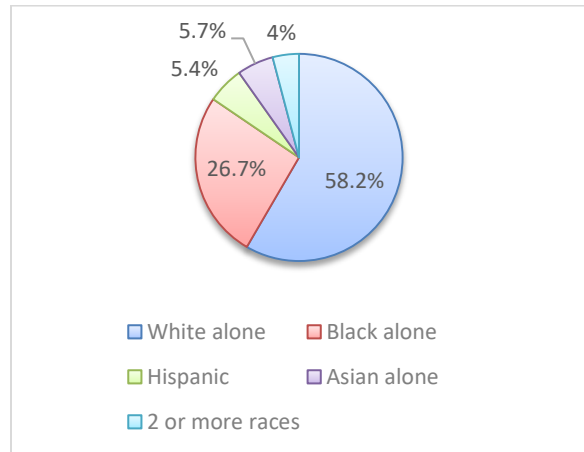
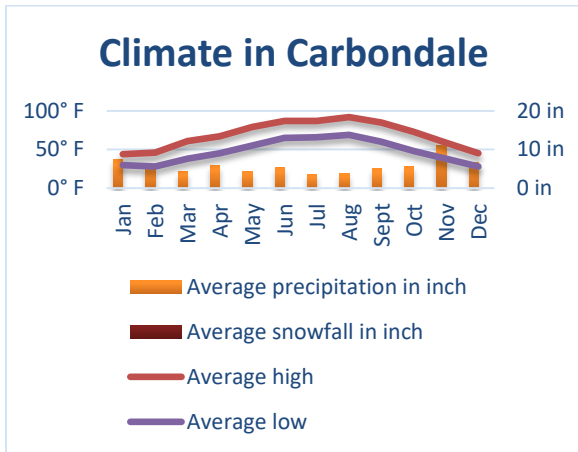
CARBONDALE COMMUNITY PROFILE

Carbondale is the trade, tourism and educational center of Southern Illinois. Area transportation includes bus, rail and air. Bordered by a national forest, national wildlife refuge, state park and home of Southern Illinois University, the community serves as the host and focal point for many of the region's business and recreation activities.

Platted November 27, 1852
Incorporated August 23, 1873
Council / Manager form of government
Home Rule municipality
Area in square miles 17.70
Number of full time equivalent employees 242.09

	Population			Races	City of Carbondale		State of Illinois
	City	County	State				
1970	22,816	55,008	11,110,285	White alone	58.4%		61.6%
1980	26,414	61,522	11,428,518	Black alone	26.1%		14.0%
1990	27,033	61,067	11,430,602	Hispanic	5.7%		17.0%
2000	20,681	59,612	12,419,293	Asian alone	5.7%		5.3%
2010	25,902	60,218	12,830,632	2 or more races	4.1%		2.0%
2019*	25,083	56,750	12,671,821				
2020	(No information available)						

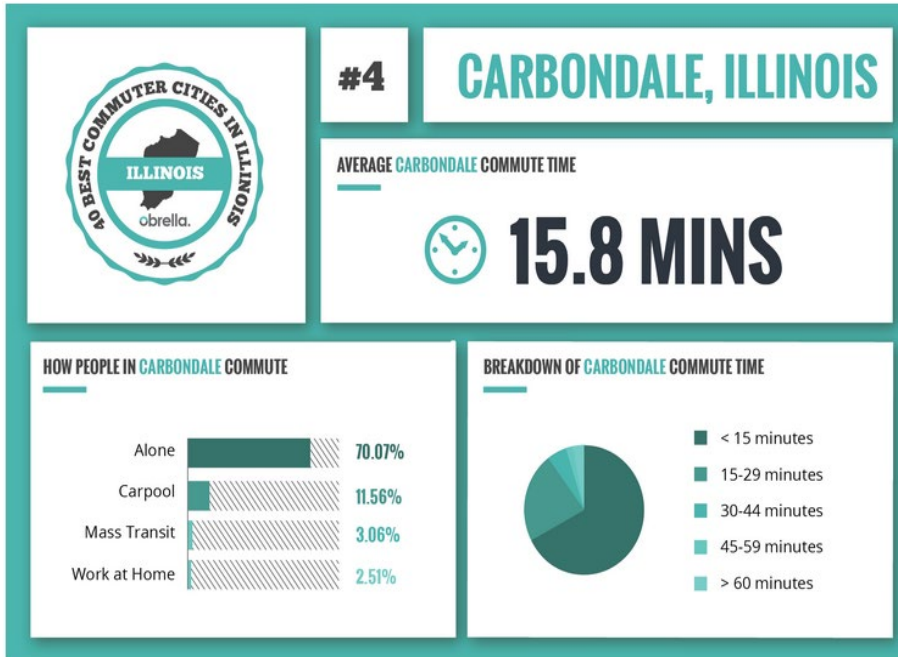
*U.S. Census Bureau Annual Estimate



The Jackson County-Murphysboro-Carbondale Enterprise Zone (EZ) was a driving force for economic development during FY 2021, the enterprise zone ISSUED certificates for 8 projects with a total construction value of \$2,195,992.

The Carbondale Small Business Development Center at SIU: Last year (2020) advised 696 clients, provided 2,920 hours of consulting, helped 28 entrepreneurs create new businesses, assisted 5 businesses expand, helped create 67 jobs and retain 434 jobs, loans and investments totaling \$16,394,279, and held 83 business workshops training 1,569 participants.

CARBONDALE COMMUNITY PROFILE



Highway Mileage

Carbondale to:

Atlanta	447
Chicago	331
Cincinnati	332
Dallas	648
Detroit	551
Denver	972
Indianapolis	264
Kansas City	356
Los Angeles	1,919
Memphis	213
Milwaukee	423
Minneapolis	662
Nashville	200
New Orleans	608
New York	1,007
Orlando	884
Seattle	2,200
Savannah	694
St. Louis	103
Washington DC	820

HEALTH CARE

Memorial Hospital of Carbondale - Memorial Hospital of Carbondale is the flagship hospital for SIH and regional referral center for the 16 county southern Illinois region. Memorial paves the way to bring big city medicine home. Physicians in over 45 different specialties practice here, bringing expertise and new procedures, but successfully tailoring them to the particular needs of a rural setting.

- 154-bed tertiary care hospital
- Southern Illinois' largest and most spacious birthing center with Level II Plus Special Care Nursery
- Only dedicated pediatric unit in the region
- The core hospital for SIH's comprehensive, regional heart program, Prairie Heart Institute.
- High level surgical capabilities including daVinci technology
- Affiliated with SIU School of Medicine through its Family Practice Residency Program
- Neuroscience program including neurosurgery and a designated Primary Stroke Center
- Accredited by the Commission on Cancer for comprehensive cancer treatment

CARBONDALE COMMUNITY PROFILE

Educational Facilities	Number	Teachers (FTE)	Enrollment	Grades
<i>Carbondale District #95 comprised of:</i>				
Carbondale Middle School	1	-	436	6-8
Lewis School	1	-	314	4-5
Thomas Elementary School	1	-	323	2-3
Parrish Elementary School	1	-	461	Pre-K-1
Total for District #95		125	1,534	
Carbondale Community High School District #165	1	74	988	9-12
<i>Outlying Districts which feed into CCHS:</i>				
Unity Point School	1	57	650	K-8
Giant City School	1	16	238	K-8
DeSoto Grade School	1	16	214	K-8
<i>Boarding/Religious/Private Schools</i>				
Brehm Preparatory School	1	25	40	6-12
Trinity Christian School	1	N/A	127	K-12
Carbondale New School	1	6	24	Pre-K-8
<i>Collegiate Level:</i>				
John A. Logan College	1	186	3,585	2-Year/Continuing Education
Southern Illinois University-Carbondale	1	843	11,346	BA/MA/PHD

Southern Illinois University Carbondale is a doctoral research university that offers more than 200 undergraduate, 80 Master’s and 30 doctoral programs. The Carnegie Foundation for the Advancement of Teaching classifies SIUC as a “High Research” University and has identified over 4,000 institutions of higher education in the United States. Among these, the National Science Foundation ranks SIU in the top 5 percent in terms of research expenditure. [<https://siu.edu/about-siu/>]

SIU-C Points of Pride:

- SIU Carbondale is a doctoral research university enrolling students from all 50 states and approximately 100 countries; offering about 100 undergraduate degrees, with more than 170 specializations, and over 100 minors.
- In 2019, SIU Carbondale joined other state institutions as a hub in the Illinois Innovation Network, an initiative to harness the research expertise of Illinois universities to drive the state’s economic growth.
- SIU ranks in the top 4.2 percent of 20,000 institutions of higher learning in the Center for World University Rankings for 2020-2021. SIU ranks No. 837 in the world and No. 194 nationally.
- Noting the university’s “unique out-of-the box passions and thinking, “progressive attitude toward students with a variety of learning backgrounds and Carnegie Classification of Institutions of Higher Education classification as a “high research’ institution, SIU Carbondale is No. 8 among College Gazette’s “10 Best ‘Hidden Gem’ Public Universities in the U.S.”
- SIU has strong federal research partnerships with agencies including the Argonne and Oak Ridge National Laboratories, the U.S. Geological Survey, the U.S. Fish and Wildlife Service and NASA.
- SIU has earned national recognition from Strive for College for excellence in service to traditionally underserved students.

[<https://news.siu.edu/points-of-pride/>]

CARBONDALE COMMUNITY PROFILE

Being a great place to live means being a great place to work. A thriving economy helps the tax base, which in turn helps a city attract and retain talent. Carbondale's economy, led by Southern Illinois University and followed by the healthcare industry, accounts for a large percentage of the jobs in Carbondale. Other top employment sectors include retail, education, construction, grocery, corporate, manufacturing and government.

Major Area Employers	Product/Service	Employees
Southern Illinois University (SIU)	Higher Education and Research	7,191
Southern Illinois Healthcare (SIH)	Regional Healthcare Provider	4,000
Neuro-Restorative	Head and Spain Cord Injury Rehab	500
Carbondale School Districts 95 and 165	Public Education	385
Wal-Mart Super Center	General Retail/Groceries/Automotive	372
Illinois Department of Transportation	Dist. 9 Regional Office	293
Com-Pac International, Inc.	Plastic Packaging Manufacturer	245
City of Carbondale	Municipal Government	242
Kroger	Retail Grocery	185
Schnucks	Retail Grocery	100
Southern Illinois Regional Social Serv.	Mental Health Services	63
Buffalo Wild Wings	Restaurant	60
Kohl's	Department Store	50

RETAIL SHOPPING

- University Mall
- Murdale Shopping Center
- University Place
- Eastgate Shopping Center
- West Park Plaza

EATING ESTABLISHMENTS: 93 dining options ranging from upscale to fast food.

AWARDS

- Secured \$2.8 million in funding from IDOT's Transit division to help fund design and construction of a new regional multimodal station
- Secured \$1.245 million in funding through DCEO's Fast Track Grant program to replace restrooms and repave all roads and parking lots at Turley Park
- Winner, "GFOA Distinguished Budget Presentation Award," since 1986
- Winner, "GFOA Certificate of Achievement for Excellence in Financial Reporting," for 28 years
- Received an unmodified opinion (highest and cleanest kind of opinion an auditor can express) from the auditor in the presentation of FY 2020 financial statements in conformity with the Generally Accepted Accounting Principles
- Named "Tree City USA," since 1981; Received Tree City USA Growth Award for the 6th consecutive year
- Secured \$1.245 million of state grant, in cooperation with the Carbondale Park District, to make accessibility improvements at Evergreen Park
- Awarded Class 2 Plant of the Year by Illinois EPA
- Winner, Bronze level for Bicycle Friendly Community, 2016-2024
- Winner, Bronze level for Bicycle Friendly Business, 2017-2021

CARBONDALE COMMUNITY PROFILE

Facilities

8	Banks
5	Local Radio Stations
230+	Cable TV channels
900	Seating cap. of largest banquet rooms
10	Hotel/Motels w/100 or less rooms each
5	Taxi/Uber
1	Movie theater
8,179	Total number of rental units
17	Trailer parks

Development Sources

City of Carbondale Economic Development
Jackson County Growth Alliance
Southern Illinois Research Business Incubator
Carbondale Chamber of Commerce
Carbondale Main Street
Carbondale Tourism

Newspapers

Southern Illinoisan (Daily)
Carbondale Times (Weekly)
Daily Egyptian (SIU Daily)

Libraries, Museums and Arts

Carbondale Public Library
Southern Illinois University Morris Library
African American Museum
Science Center
SIU University Museum
Stage Company
McLeod Theatre
Shryock Auditorium
R. Buckminster Fuller Dome Home

Recreational Facilities

4	Public golf courses (within 7 miles)
2	Public tennis courts
2	Country clubs
2	Recreation center/park districts
7	Public parks
1	State Park (Giant City State Park)
1	SIU-C Touch of Nature Environ. & Res. Center
1	National forest (Shawnee National Forest)
2	Wildlife Ref. (Crab Orchard & Touch of Nature)
2	Reservoirs (Evergreen Terrace & Cedar Lake)
2	Public swimming pools
1	Outdoor spray park
1	Outdoor splash park
1	Shawnee Wine Trail (11 wineries)

Public access to lakes and rivers for swimming, water skiing, fishing and boating

Transportation

Rail Service – Freight

Canadian National – New Orleans, Memphis, Chicago, Canada
Carbondale maintains a railroad car maintenance facility
Nearest piggyback is 10 miles
Frequency of switching is “as needed”

Rail Service – Passenger

Amtrak City of New Orleans – Chicago, Champaign, Carbondale, Memphis, New Orleans
Amtrak Illini – Chicago, Champaign, Carbondale
Amtrak Saluki – Chicago, Champaign, Carbondale

Air Service

Southern Illinois Airport
Williamson County Airport

Motor Carrier

West Bus Service (Charters)
Distance to nearest interstate interchange: 12 miles
Number of local terminals: 2
Number of carriers: 2
(Includes intra and interstate carriers)

Highways

Highways serving community:
- U.S. Route 51 and Illinois Route 13
Interstates serving community:
- I-57, I-24, I-64
Nearest Interchange: 12 miles

CARBONDALE COMMUNITY PROFILE

Carbondale Cedar Lake, created in 1974 to supply tap water to the residents of Carbondale, now provides fishing, swimming and active recreation purposes.



Carbondale was named by Outdoor Life magazine as one of the top 200 towns for sportsmen and is home to one of Southern Illinois' most beautiful recreational facilities --- Cedar Lake.

Carbondale is proud to border the **Shawnee National Forest**, which encompasses more than 270,000 acres in Southern Illinois and is home to outstanding natural areas that offer numerous outdoor experiences. Bordered on the east and west by the Ohio and Mississippi Rivers, the Shawnee National Forest flourishes with vegetation, wildlife and recreational opportunities.

In the summer of 1995, the owners of the first three wineries in Southern Illinois recognized that their wineries had untapped tourism potential. With this in mind and a lot of work, the Shawnee Hills Wine Trail was born as the first wine trail in Illinois. In 2020, **Shawnee Hills Wine Trail** marked its 25th anniversary. The Trail continues to expand and is no longer easy to travel in one day. Many Bed & Breakfasts have opened in the area with solid bookings throughout the year. The Shawnee Hills Wine Trail looks forward to increasing growth and success in the years to come, and is especially proud of the new American Viticultural Area (AVA) designation. This is a very exciting time for wine in the Shawnee Hills of Southern Illinois.

Crab Orchard National Wildlife Refuge's 44,000 acres of land and water contain a wide diversity of flora and fauna. Major habitat types on the refuge include hardwood forest, agricultural land, grazing units, brush land, wetlands, and lakes. The refuge provides significant resting areas for migratory birds utilizing the Mississippi Flyway. Wintering numbers of Canada Geese can peak at 200,000. A total of 700 plant species, 245 bird species, 33 mammal species, 63 fish species, and 44 reptile and amphibian species have been documented on the refuge. The western 24,000 acres of the refuge provide a wide range of recreational opportunities, including a 4,050-acre wilderness area. The eastern 20,000 acres is a wildlife sanctuary and public use is limited.

Southern Illinois University **Student Recreation Center** offers swimming and sports facilities, intramurals, sport clubs, group fitness programs, outdoor equipment rental and much more for students and members. The Student Recreation Center can also accommodate meetings and events.

Southern Illinois University's **Touch of Nature Environmental Center** is an outdoor education and recreation center serving SIU, the region and the nation with an outdoor laboratory for experiential learning, a field site for research, and a provider of therapeutic recreation, environmental education, adventure education, personal and interpersonal growth experiences and facilities services.

The **Carbondale Park District** offers a wide variety of programs to fit the needs of the community. The Park District serves a diverse population with a wide range of interests. The District's programs and services serve infants, preschoolers, youths, adults and seniors, as well as family interests. The Park District offers special events, instructional lessons, free programs and leisure services.

CARBONDALE COMMUNITY PROFILE

Carbondale Achievements for Fiscal Year 2021

Zippia, an online career resource company, recognized the City of Carbondale as “The Best City in Illinois for Working Families.” The company ranked over 500 cities on the percent of median income that covers daycare costs, average home price, quality of public schools, and commute time.

According to Zippia, the company sought to identify a city in each state where working families can balance their work and personal lives. Zippia says of the cities they ranked, the average working family does not have to worry about giving up family time or retirement savings.