



Available for Development Business Park East Reed Station Road

Property Information

Zoned:

LI – Light Industrial

Lot Size: 1 – 55 acres

Site Information:

Located adjacent to IL Route 13 and just 1.5 miles from Southern Illinois University, this park offers ready to build lots of various sizes with all utilities including fiber optics.

Adjacent Businesses:

Professional offices,
Verizon Wireless, Neon
Internet/School Center,
Retail center,
Hotels / Restaurants

Incentives Available:

Enterprise Zone

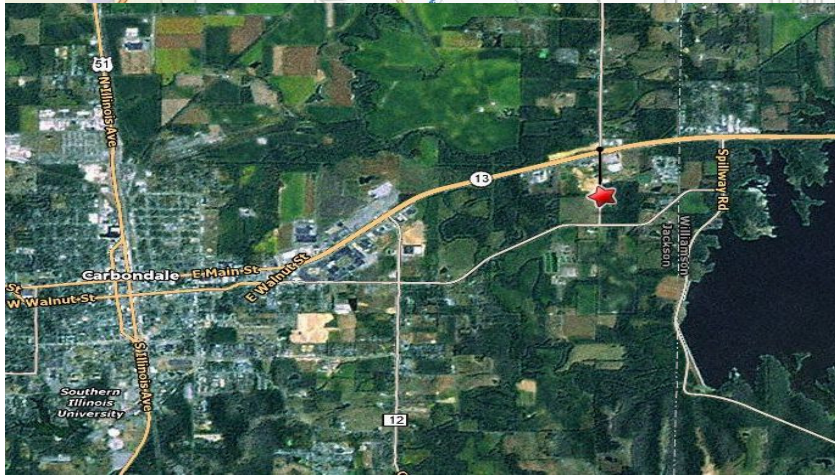
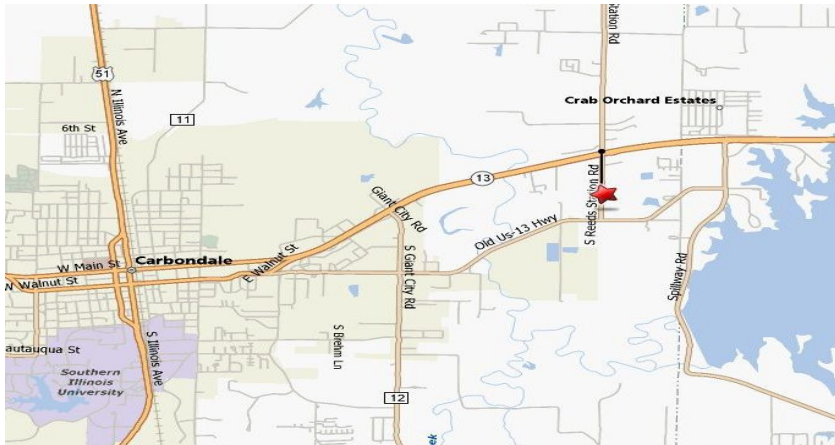
Demographics

Population:

Carbondale: 25,597

SIU Students: 21,000

Traffic Counts: 30,000



Existing Businesses



For Information: Kevin Baity, 618-457-3226 or kbaity@ci.carbondale.il.us